

EVERGREEN GARDENS TOWN HOMES - PHASE 1

IN

PORTION OF SECTION 17, T. 33 N., R. 70 E., M.D.B. & M.

CITY OF WEST WENDOVER

010-701
(Page 2 of 2)



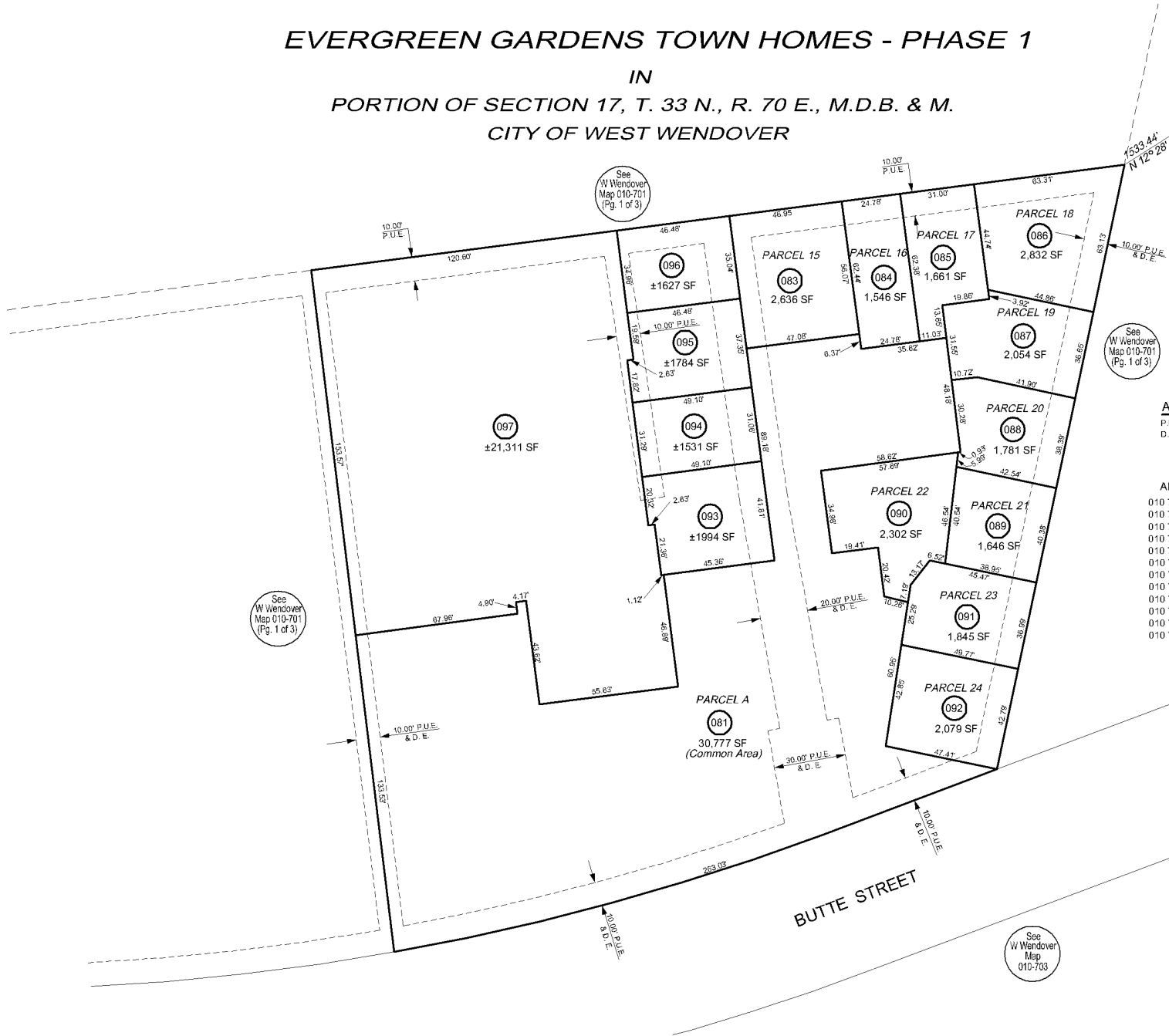
SCALE: 1" = 40'

ABBREVIATIONS:

P.U.E. PUBLIC UTILITY EASEMENT
D.E. DRAINAGE EASEMENT

APN ADDRESS

APN	ADDRESS
010 701 081	BUTTE ST
010 701 082	BUTTE ST
010 701 083	1782 BUTTE ST UNIT 1
010 701 084	1782 BUTTE ST UNIT 2
010 701 085	1780 BUTTE ST UNIT 1
010 701 086	1780 BUTTE ST UNIT 2
010 701 087	1778 BUTTE ST UNIT 1
010 701 088	1778 BUTTE ST UNIT 2
010 701 089	1776 BUTTE ST UNIT 2
010 701 090	1776 BUTTE ST UNIT 1
010 701 091	1768 BUTTE ST UNIT 1
010 701 092	1768 BUTTE ST UNIT 2



ELKO COUNTY, NEVADA

FOR ASSESSMENT USE ONLY

This map does NOT represent a survey. It is compiled from official records, including surveys and deeds. Recorded documents should be used for detailed legal information. Unless approved by Elko County Assessor, other uses are forbidden.

Revised 12/2005 JLS