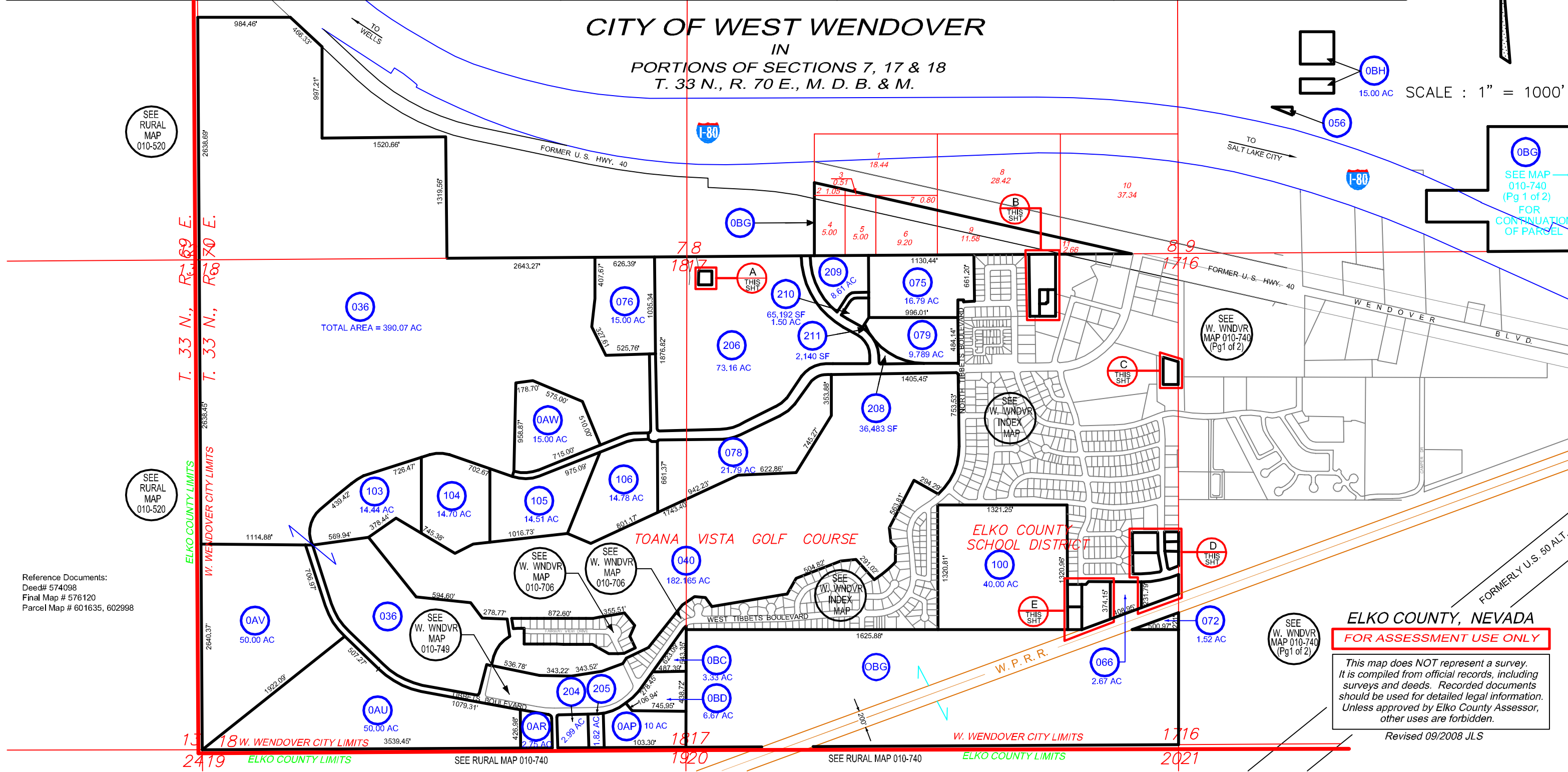


CITY OF WEST WENDOVER
IN
PORTIONS OF SECTIONS 7, 17 & 18
T. 33 N., R. 70 E., M. D. B. & M.



SCALE : 1" = 1000'

Reference Documents:
Deed# 574098
Final Map # 576120
Parcel Map # 601635, 602998

ELKO COUNTY, NEVADA
FOR ASSESSMENT USE ONLY

This map does NOT represent a survey. It is compiled from official records, including surveys and deeds. Recorded documents should be used for detailed legal information. Unless approved by Elko County Assessor, other uses are forbidden.

Revised 09/2008 JLS